

## GMX560 Compact Weather Station

Easy-to-use, integrated multi-parameter weather station for marine applications

MaxiMet Marine weather station is supported by a range of accessories. These accessories can be used to connect, install and maintain MaxiMet Marine. The accessories have been designed, or selected, to ensure the long term performance of MaxiMet Marine.

ACCESSORIES	
Connector, to connect to MaxiMet (one is supplied with MaxiMet unit)	1957-PK-150
Cable, power & communications cable, 2m with fitted M12 connector at MaxiMet end	1957-PK-151
Cable, power & communications cable, 10m with fitted M12 connector at MaxiMet end	1957-PK-153
Cable, power & communications cable, 20m with fitted M12 connector at MaxiMet end	1957-PK-154
Cable for configuration, MaxiMet to USB for power & comms, 1.8m	1957-PK-155
Bracket for mounting to pole	1771-PK-130
MetSet software* to configure MaxiMet MetView software*, to view reported parameters	* download from Gill Instruments website



### Accessory Descriptions

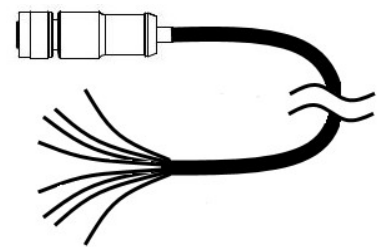
- Connector**

A replacement M12 connector is available if required. The connector is field wireable and does not require any additional pins or soldering.



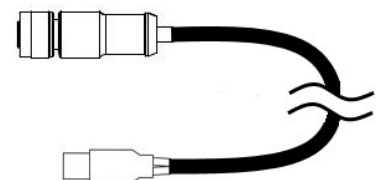
- Cables for operational use**

Gill can supply cables in various fixed lengths with pre-moulded M12 connectors fitted.



- Cable for set-up/configuration**

The cable can be used to connect MaxiMet to a USB port on a computer. Using MetSet, the set-up of the MaxiMet unit can be updated to suit a particular requirement. The cable is 1.8m long and supplied with a M12 connector on one end and a USB connector on the other end.



## GMX560 Compact Weather Station

Reliable, high quality compact, integrated weather stations

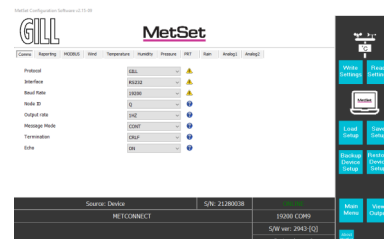
- **Stainless steel bracket for pole mounting (1771-PK-130)**

The bracket can be used to mount a MaxiMet unit to a pole of diameter 25mm to 50mm. The bracket is approximately 87mm long and 94mm wide.



- **MetSet software**

MetSet is a Windows compatible software package that can be used to change the set-up of a MaxiMet unit. MetSet is free to use and can be downloaded from [gillinstruments.com](http://gillinstruments.com).



- **MetView software**

MetView is a Windows compatible software package that can be used to view and log the measurement data provided by MaxiMet. MetView is free to use and can be downloaded from [gillinstruments.com](http://gillinstruments.com).

